

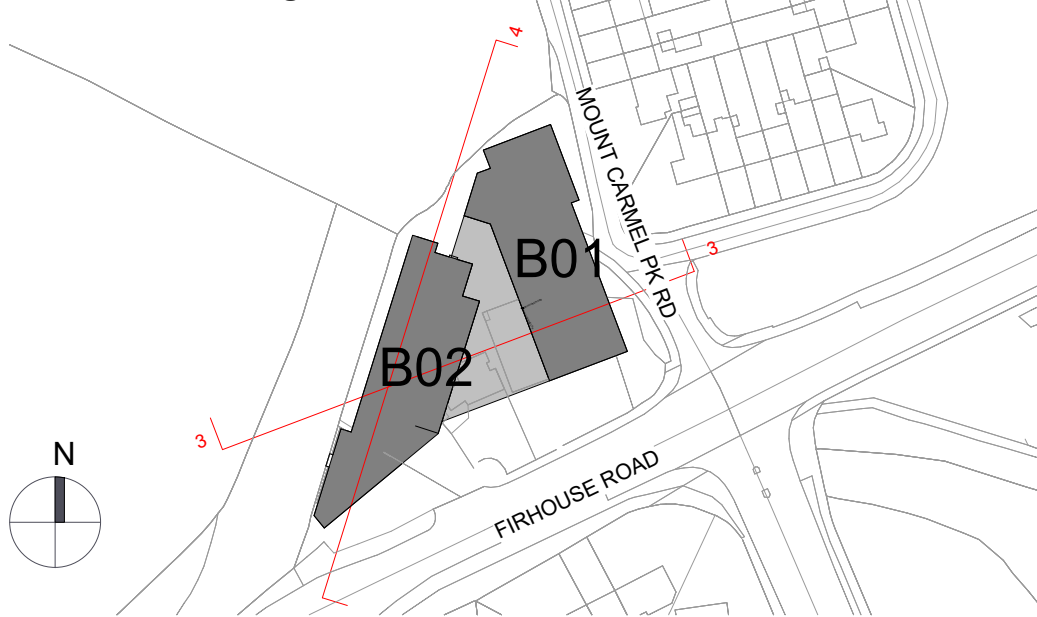


③ Section 3 - Contiguous Section North
1 : 500



④ Section 4 - Contiguous Section East
1 : 500

Permitted Contiguous Section



Revision Description	Date	Rev. No.	Issued by
S247 Submission	10.04.2025	A3-C01	LS
32B Pre Planning - Permitted	13.06.2025	A3-C02	LS

Any reference to fire safety design or performance is presented for coordination purposes only. Refer only to the granted Fire Safety Certificate, and fire consultant's information for fire safety design, specification and performance.

Figured dimensions only to be used. This drawing is copyright of O'Mahony Pike Architects Ltd. All information is shared as per approved use in accordance with ISO19650-2:2018, Table 5; Standard Codes for Suitability of Models and Documents and the BEP. If the 'Status' field is empty, this information has been shared at 50 - WIP.

o'mahony pike architecture urban design email: info@omahonypike.com tel: +353 1 202 7400 fax: +353 1 283 0822 www.omahonypike.com	Dublin The Chapel Mount St. Anne's Milltown, Dublin 6 D06 XN52 Ireland	Cork One South Mall Cork City Co. Cork T12 CCN3 Ireland	Project No.: 20022A	Scale @ A1: 1 : 500
			Project Lead: MH	Date: 13.06.2025
			Drawn By: LS	Revision: A3-C02
			Purpose: Planning	Status: CP

Project: Firhouse
Location: Firhouse Road, Firhouse, Dublin 24
Client: Bluemont Developments (Firhouse) Limited

Drawing Title: Permitted Contiguous Section
Drawing No.: 20022A-OMP-ZZ-ZZ-DR-A-3100

Source file: 20022A-OMP-ZZ-ZZ-M3-A-0002.rvt