



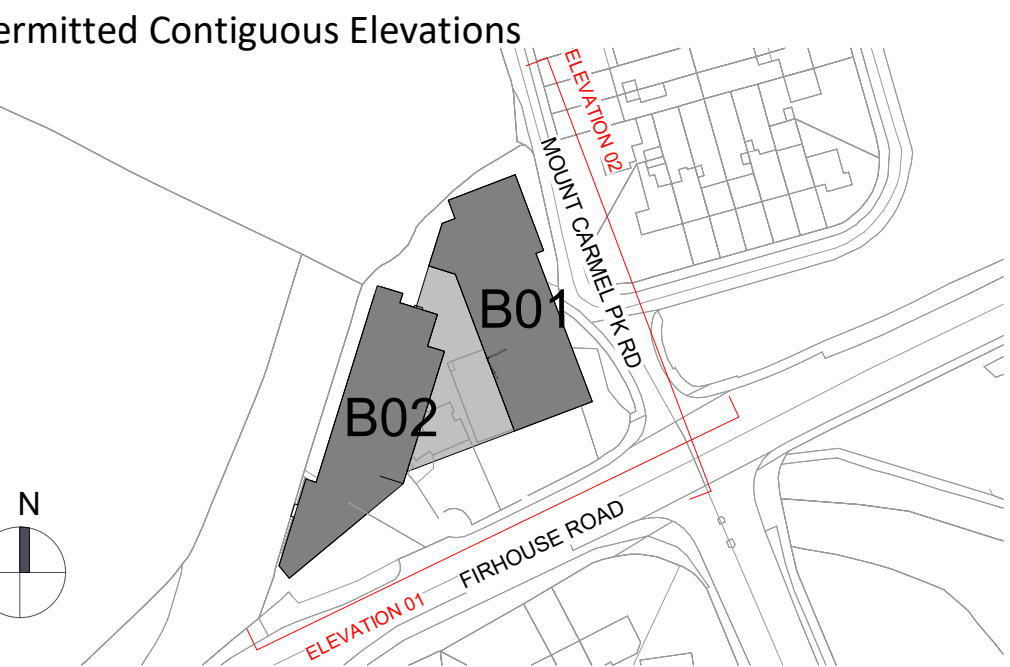
Contiguous Proposed Elevation 01 - Firhouse Road (South)

1:200



Contiguous Proposed Elevation 02 - Mount Carmel Pk Road (East)

1:200



Material Schedule	
1a	Selected Zinc Cladding - Grey
1b	Selected Zinc Cladding - Light Grey
2	Composite Stone
3	Selected Red Brick
3a	Selected Red Brick - Soldier Course
4	Selected White Brick
4a	Selected White Brick - Soldier Course
4b	Selected White Brick - Alternating Stretcher Bond and Soldier Course
5	Selected Buff Brick
5a	Selected Buff Brick - Soldier Course
7	Selected Zinc Roof - Grey
8	Selected Glass
9	Selected Frameless Glass Balustrade
10	Selected PPC Steel Vertical Balustrade
11	Selected Render - Dark

Revision Description	Date	Rev. No.	Issued by
S247 Submission	10.04.2025	A3-C01	LS
3278 Pre Planning - Permitted	13.06.2025	A3-C02	LS

Any reference to fire safety design or performance is presented for coordination purposes only. Refer only to the granted Fire Safety Certificate, and fire consultant's information for fire safety design, specification and performance.

Figured dimensions only to be used. This drawing is copyright of O'Mahony Pike Architects Ltd. All information is shared as per approved use in accordance with ISO19650-2:2018, Table 5; Standard Codes for Suitability of Models and Documents and the BEP. If the 'Status' field is empty, this information has been shared at 50 - WIP.

**o'mahony pike**  
architecture | urban design  
email: info@omahonypike.com  
tel: +353 1 202 7460  
fax: +353 1 283 0822  
www.omahonypike.com

**Dublin**  
The Chapel  
Mount St. Anne's  
Milltown, Dublin 6  
D06 N9S2 Ireland

**Cork**  
One South Mall  
Cork City  
Co. Cork  
T12 CN33 Ireland

**Project No.:** 20022A  
**Project Lead:** MH  
**Drawn By:** LS  
**Purpose:** Planning

**Location:** Firhouse Road, Firhouse, Dublin 24  
**Client:** Bluemont Developments (Firhouse) Limited

**Scale @ A0:** 1 : 200  
**Date:** 13.06.2025  
**Revision:** A3-C02  
**Status:** CP

**Drawing Title:** Permitted Contiguous Elevations  
**Drawing No.:** 20022A-OMP-ZZ-ZZ-DR-A-2100

Source Ref: 20022A-OMP-ZZ-ZZ-DR-A-2100-1.0